

STANDARD DEPARTURE CHART INSTRUMENT(SID) - ICAO

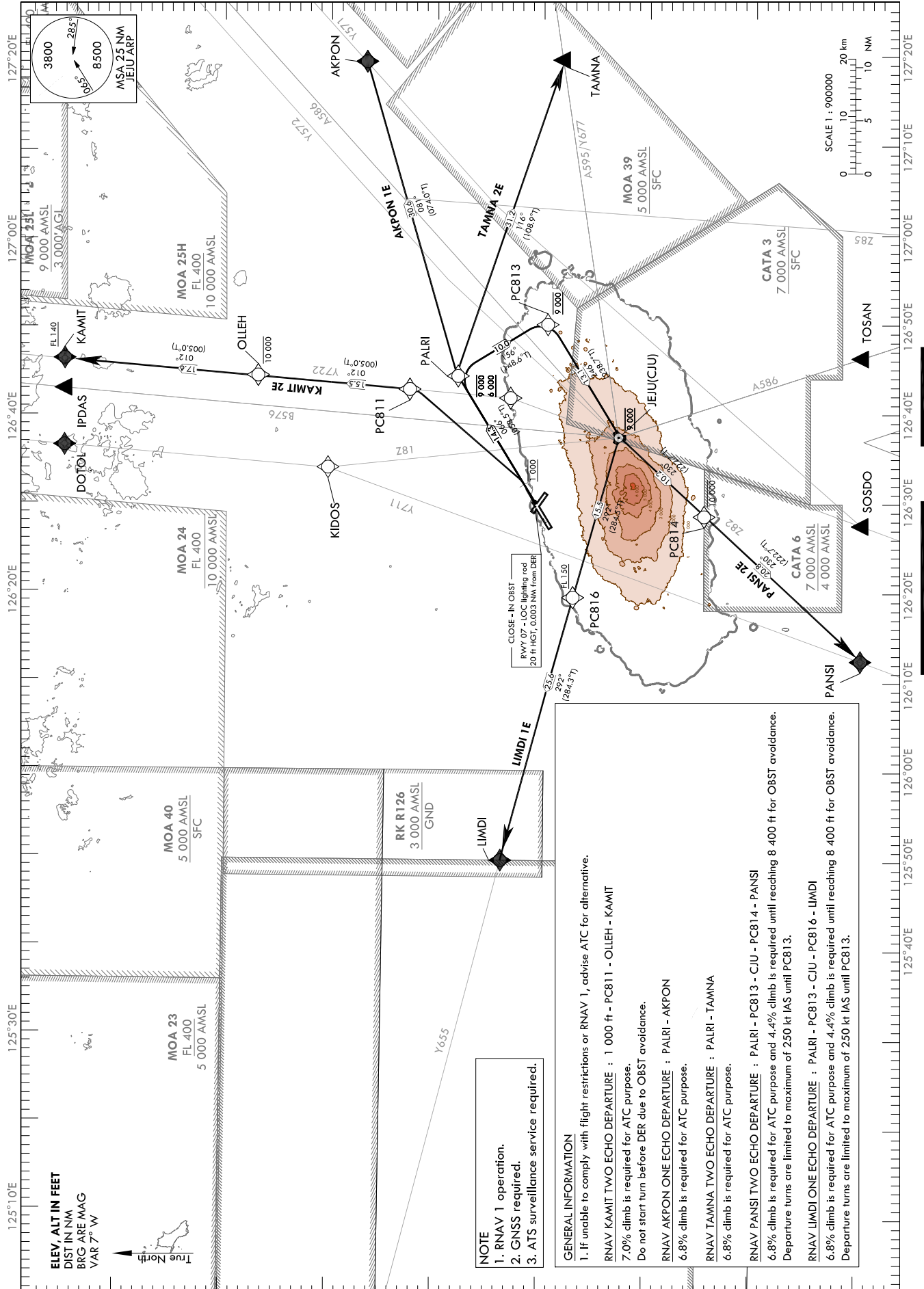
TRANSITION ALT 14 000
TRANSITION LVL FL 140

JEJU DEP 119.225
JEJU TWR 121.2
118.2
118.55

JEJU/Jeju Intl(RKPC)

RWY 07
RNAV KAMIT 2E
RNAV AKPON 1E, RNAV TAMNA 2E
RNAV PANSI 2E, RNAV LIMDI 1E

Note : Departure under ICAO Flight Procedures.



Standard Instrument Departure Procedure Coding Tables

RNAV KAMIT 2E

Serial Number	Path Descriptor	Waypoint Identifier	Fly-over	Course/Track °M(T)	Distance (NM)	Turn direction	Altitude (ft)	Speed (kt)	Coordinates	VPA/RDH	Navigation specification	Remarks
001	CA	-	-	066(058.5)	-	-	@1 000	-	-	-	RNAV 1	-
002	DF	PC811	-	-	-	L	-	-	33°42'12.1"N 126°42'48.8"E	-	RNAV 1	-
003	TF	OLLEH	-	012(005.0)	15.5	-	-10 000	-	33°57'42.2"N 126°44'26.5"E	-	RNAV 1	-
004	TF	KAMIT	-	012(005.0)	17.6	-	+FL 140	-	34°15'14.1"N 126°46'17.7"E	-	RNAV 1	-

RNAV AKPON 1E

Serial Number	Path Descriptor	Waypoint Identifier	Fly-over	Course/Track °M(T)	Distance (NM)	Turn direction	Altitude (ft)	Speed (kt)	Coordinates	VPA/RDH	Navigation specification	Remarks
001	CF	PALRI	-	066(058.5)	14.3	-	-9 000 +6 000	-	33°38'27.2"N 126°44'37.4"E	-	RNAV 1	-
002	TF	AKPON	-	081(074.0)	30.6	-	-	-	33°46'49.6"N 127°19'53.0"E	-	RNAV 1	-

RNAV TAMNA 2E

Serial Number	Path Descriptor	Waypoint Identifier	Fly-over	Course/Track °M(T)	Distance (NM)	Turn direction	Altitude (ft)	Speed (kt)	Coordinates	VPA/RDH	Navigation specification	Remarks
001	CF	PALRI	-	066(058.5)	14.3	-	-9 000 +6 000	-	33°38'27.2"N 126°44'37.4"E	-	RNAV 1	-
002	TF	TAMNA	-	116(108.9)	31.2	-	-	-	33°28'15.5"N 127°19'53.0"E	-	RNAV 1	-

RNAV PANSI 2E

Serial Number	Path Descriptor	Waypoint Identifier	Fly-over	Course/Track °M(T)	Distance (NM)	Turn direction	Altitude (ft)	Speed (kt)	Coordinates	VPA/RDH	Navigation specification	Remarks
001	CF	PALRI	-	066(058.5)	14.3	-	-	-250	33°38'27.2"N 126°44'37.4"E	-	RNAV 1	-
002	TF	PC813	-	156(148.6)	10.0	-	@9 000	-250	33°29'55.5"N 126°50'50.0"E	-	RNAV 1	-
003	TF	CJU	-	246(238.7)	13.1	-	@9 000	-	33°23'04.6"N 126°37'26.8"E	-	RNAV 1	-
004	TF	PC814	-	230(222.8)	10.2	-	-10 000	-	33°15'36.4"N 126°29'13.5"E	-	RNAV 1	-
005	TF	PANSI	-	230(222.7)	20.8	-	-	-	33°00'14.4"N 126°12'25.1"E	-	RNAV 1	-

RNAV LIMDI 1E

Serial Number	Path Descriptor	Waypoint Identifier	Fly-over	Course/Track °M(T)	Distance (NM)	Turn direction	Altitude (ft)	Speed (kt)	Coordinates	VPA/RDH	Navigation specification	Remarks
001	CF	PALRI	-	066(058.5)	14.3	-	-	-250	33°38'27.2"N 126°44'37.4"E	-	RNAV 1	-
002	TF	PC813	-	156(148.6)	10.0	-	@9 000	-250	33°29'55.5"N 126°50'50.0"E	-	RNAV 1	-
003	TF	CJU	-	246(238.7)	13.1	-	@9 000	-	33°23'04.6"N 126°37'26.8"E	-	RNAV 1	-
004	TF	PC816	-	292(284.5)	15.5	-	+FL 150	-	33°26'56.5"N 126°19'30.8"E	-	RNAV 1	-
005	TF	LIMDI	-	292(284.3)	25.6	-	-	-	33°33'13.3"N 125°49'53.0"E	-	RNAV 1	-

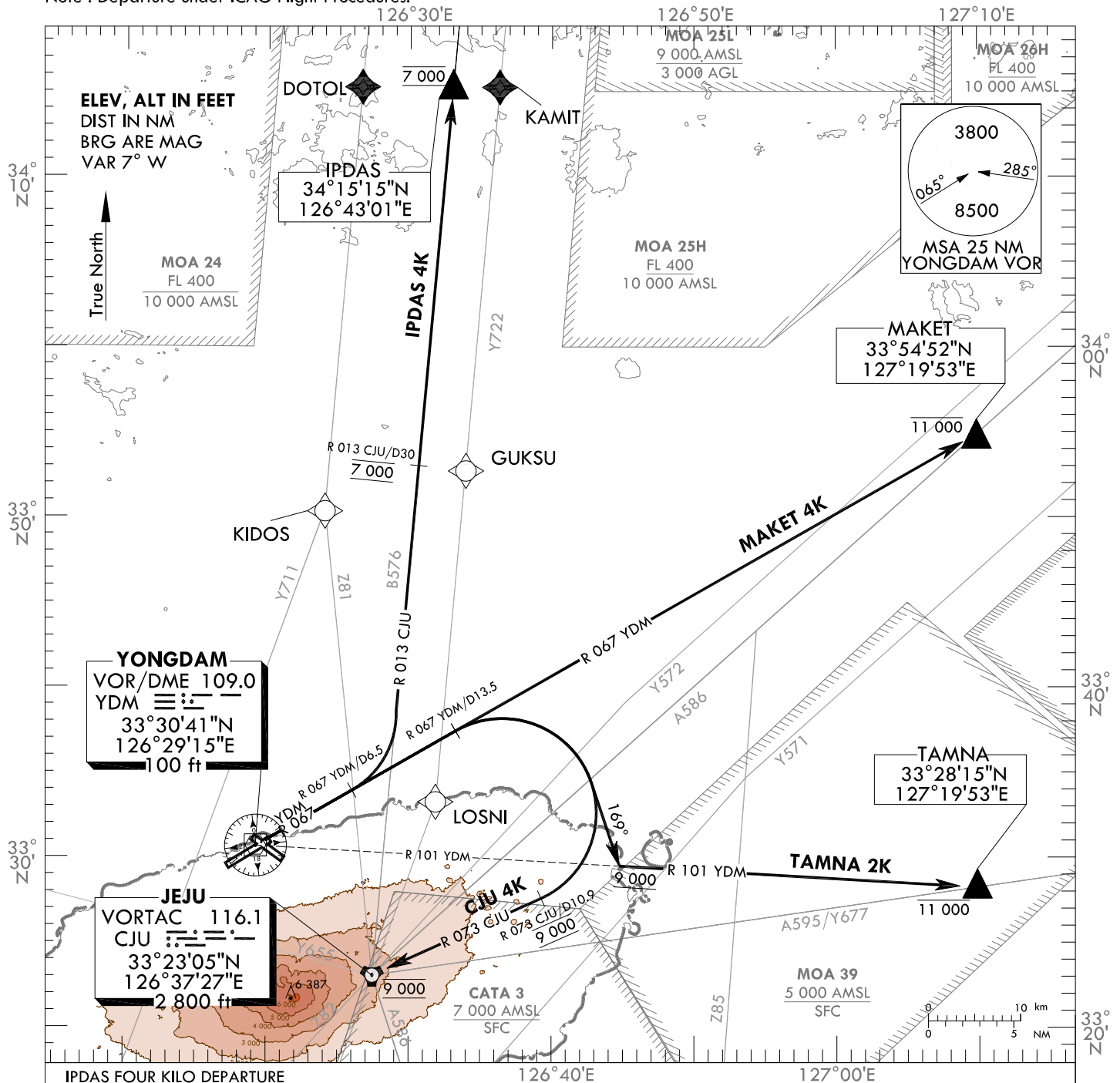
**STANDARD DEPARTURE CHART
INSTRUMENT(SID) - ICAO**

TRANSITION ALT 14 000
TRANSITION LVL FL 140

JEJU DEP 119.225
121.2
JEJU TWR 118.2
118.55

JEJU/Jeju Intl(RKPC)
RWY 07
IPDAS 4K, MAKET 4K
TAMNA 2K, CJU 4K

Note : Departure under ICAO Flight Procedures.



IPDAS FOUR KILO DEPARTURE

Climb on R 067 YDM until D6.5, then turn Left to intercept R 013 CJU then proceed direct to IPDAS.

* Minimum 4.9% CG is required for ATC purpose.

* Cross R 013 CJU/D30 at 7 000 ft and maintain 7 000 ft unless otherwise directed by ATC.

MAKET FOUR KILO DEPARTURE

Climb on R 067 YDM, then proceed direct to MAKET.

* Cross MAKET at or below 11 000 ft unless otherwise directed by ATC.

TAMNA TWO KILO DEPARTURE

Climb on R 067 YDM until D13.5, then turn Right HDG 169° to intercept R 101 YDM then proceed direct to TAMNA.

* Minimum 5.4% CG is required for ATC purpose.

* Maintain at or above 9 000 ft before intercepting R 101 YDM and Cross TAMNA at or below 11 000 ft unless otherwise directed by ATC.

JEJU FOUR KILO DEPARTURE

Climb on R 067 YDM until D13.5, then turn Right to intercept R 073 CJU/D10.9, then proceed direct to CJU.

* Minimum 5.4% CG is required for ATC purpose and 3.8% CG is required until 6 800 ft for OBST avoidance.

* Cross R 073 CJU/D10.9 at 9 000 ft and maintain 9 000 ft unless otherwise directed by ATC.

Change : Information of sequence for TWR FREQ.

INTENTIONALLY

LEFT

BLANK

STANDARD DEPARTURE CHART INSTRUMENT(SID) - ICAO

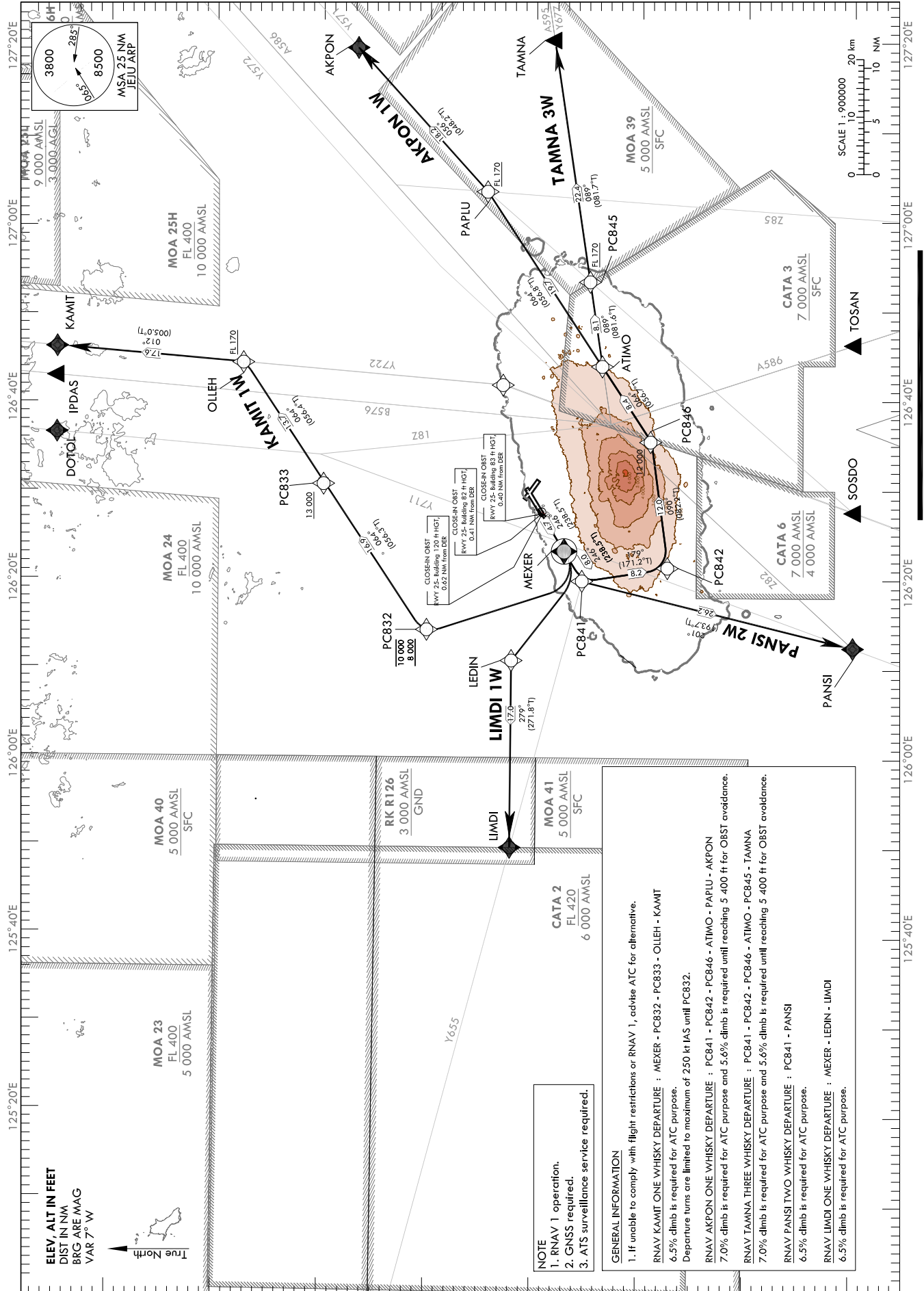
TRANSITION ALT 14 000
TRANSITION LVL FL 140

JEJU DEP 119.225
JEJU TWR 121.2
118.2
118.55

JEJU/Jeju Intl(RKPC)

RWY 25
RNAV KAMIT 1W, RNAV AKPON 1W
RNAV TAMNA 3W, RNAV PANSI 2W
RNAV LIMDI 1W

Note : Departure under ICAO Flight Procedures.



ELEV, ALT IN FEET
DIST IN NM
BRG ARE MAG
VAR 7° W



NOTE
1. RNAV 1 operation.
2. GNSS required.
3. ATS surveillance service required.

GENERAL INFORMATION

- If unable to comply with flight restrictions or RNAV 1, advise ATC for alternative.
- RNAV KAMIT ONE WHISKY DEPARTURE : MEXER - PC832 - PC833 - OLLEH - KAMIT
6.5% climb is required for ATC purpose.
Departure turns are limited to maximum of 250 kt IAS until PC832.
- RNAV AKPON ONE WHISKY DEPARTURE : PC841 - PC842 - PC846 - ATIMO - PAPLU - AKPON
7.0% climb is required for ATC purpose and 5.6% climb is required until reaching 5 400 ft for OBST avoidance.
- RNAV TAMNA THREE WHISKY DEPARTURE : PC841 - PC842 - PC846 - ATIMO - PC845 - TAMNA
7.0% climb is required for ATC purpose and 5.6% climb is required until reaching 5 400 ft for OBST avoidance.
- RNAV PANSI TWO WHISKY DEPARTURE : PC841 - PANSI
6.5% climb is required for ATC purpose.
- RNAV LIMDI ONE WHISKY DEPARTURE : MEXER - LEDIN - LIMDI
6.5% climb is required for ATC purpose.

Change : Information of sequence for TWR FREQ and Withdrawal of YDM VOR/DME, CJU VORTAC.

AERONAUTICAL DATA TABULATION

Standard Instrument Departure Procedure Coding Tables

RNAV KAMIT 1W

Serial Number	Path Descriptor	Waypoint Identifier	Fly-over	Course/Track °M(°T)	Distance (NM)	Turn direction	Altitude (ft)	Speed (kt)	Coordinates	VPA/TCH	Navigation specification	Remarks
001	CF	MEXER	Y	246(238.5)	4.7	-	-	-250	33°27'28.0"N 126°23'12.0"E	-	RNAV 1	-
002	DF	PC832	-	-	-	R	-10 000 +8 000	-250	33°40'46.0"N 126°13'51.9"E	-	RNAV 1	-
003	TF	PC833	-	064(056.3)	16.9	-	+13 000	-	33°50'08.8"N 126°30'44.8"E	-	RNAV 1	-
004	TF	OLLEH	-	064(056.4)	13.7	-	+FL 170	-	33°57'42.2"N 126°44'26.5"E	-	RNAV 1	-
005	TF	KAMIT	-	012(005.0)	17.6	-	-	-	34°15'14.1"N 126°46'17.7"E	-	RNAV 1	-

RNAV AKPON 1W

Serial Number	Path Descriptor	Waypoint Identifier	Fly-over	Course/Track °M(°T)	Distance (NM)	Turn direction	Altitude (ft)	Speed (kt)	Coordinates	VPA/TCH	Navigation specification	Remarks
001	CF	PC841	-	246(238.5)	8.0	-	-	-	33°25'42.7"N 126°19'47.8"E	-	RNAV 1	-
002	TF	PC842	-	179(171.2)	8.2	-	-	-	33°17'38.3"N 126°21'17.3"E	-	RNAV 1	-
003	TF	PC846	-	090(082.2)	12.0	-	+12 000	-	33°19'15.6"N 126°35'28.6"E	-	RNAV 1	-
004	TF	ATIMO	-	064(056.7)	8.4	-	-	-	33°23'52.5"N 126°43'51.2"E	-	RNAV 1	-
005	TF	PAPLU	-	064(056.8)	19.7	-	+FL 170	-	33°34'41.3"N 127°03'36.5"E	-	RNAV 1	-
006	TF	AKPON	-	056(048.2)	18.2	-	-	-	33°46'49.6"N 127°19'53.0"E	-	RNAV 1	-

JEJU/Jeju Intl(RKPC)
RWY 25

RNAV TAMNA 3W

RNAV PANSI 2W, RNAV LIMDI 1W

AERONAUTICAL DATA TABULATION

Standard Instrument Departure Procedure Coding Tables

RNAV TAMNA 3W

Serial Number	Path Descriptor	Waypoint Identifier	Fly-over	Course/Track °M(°T)	Distance (NM)	Turn direction	Altitude (ft)	Speed (kt)	Coordinates	VPA/ TCH	Navigation specification	Remarks
001	CF	PC841	-	246(238.5)	8.0	-	-	-	33°25'42.7"N 126°19'47.8"E	-	RNAV 1	-
002	TF	PC842	-	179(171.2)	8.2	-	-	-	33°17'38.3"N 126°21'17.3"E	-	RNAV 1	-
003	TF	PC846	-	090(082.2)	12.0	-	+12 000	-	33°19'15.6"N 126°35'28.6"E	-	RNAV 1	-
004	TF	ATIMO	-	064(056.7)	8.4	-	-	-	33°23'52.5"N 126°43'51.2"E	-	RNAV 1	-
005	TF	PC845	-	089(081.6)	8.1	-	+FL 170	-	33°25'03.2"N 126°53'24.0"E	-	RNAV 1	-
006	TF	TAMNA	-	089(081.7)	22.4	-	-	-	33°28'15.5"N 127°19'53.0"E	-	RNAV 1	-

RNAV PANSI 2W

Serial Number	Path Descriptor	Waypoint Identifier	Fly-over	Course/Track °M(°T)	Distance (NM)	Turn direction	Altitude (ft)	Speed (kt)	Coordinates	VPA/ TCH	Navigation specification	Remarks
001	CF	PC841	-	246(238.5)	8.0	-	-	-	33°25'42.7"N 126°19'47.8"E	-	RNAV 1	-
002	TF	PANSI	-	201(193.7)	26.2	-	-	-	33°00'14.4"N 126°12'25.1"E	-	RNAV 1	-

RNAV LIMDI 1W

Serial Number	Path Descriptor	Waypoint Identifier	Fly-over	Course/Track °M(°T)	Distance (NM)	Turn direction	Altitude (ft)	Speed (kt)	Coordinates	VPA/ TCH	Navigation specification	Remarks
001	CF	MEXER	Y	246(238.5)	4.7	-	-	-	33°27'28.0"N 126°23'12.0"E	-	RNAV 1	-
002	DF	LEDIN	-	-	-	R	-	-	33°32'42.1"N 126°10'14.9"E	-	RNAV 1	-
003	TF	LIMDI	-	279(271.8)	17.0	-	-	-	33°33'13.3"N 125°49'53.0"E	-	RNAV 1	-

Change : Information of standard instrument departure procedure for RWY 25(RNAV TAMNA 2W → RNAV TAMNA 3W).

INTENTIONALLY

LEFT

BLANK

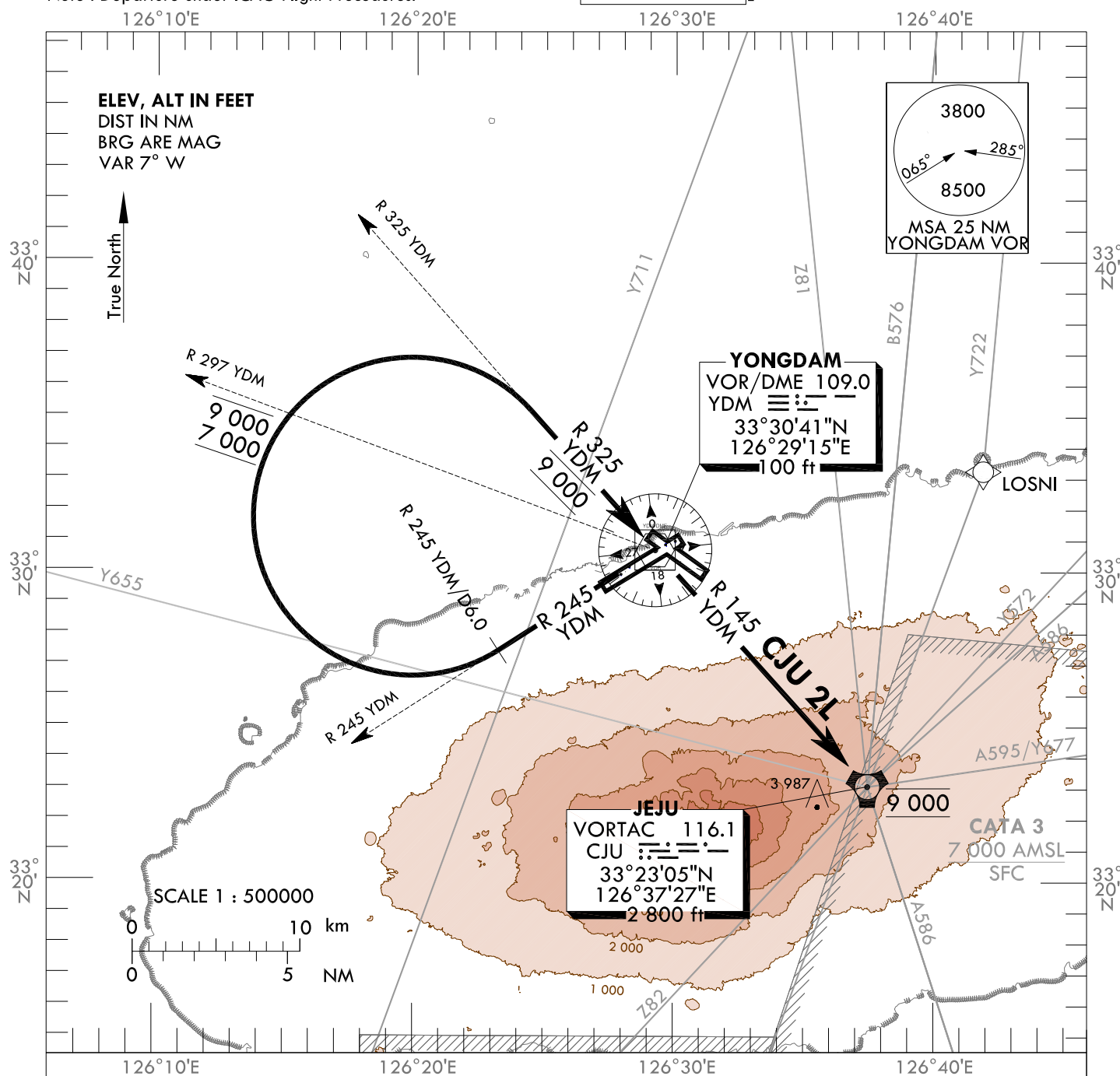
**STANDARD DEPARTURE CHART
INSTRUMENT(SID) - ICAO**

TRANSITION ALT 14 000
TRANSITION LVL FL 140

JEJU DEP 119.225
121.2
JEJU TWR 118.2
118.55

JEJU/Jeju Intl(RKPC)
RWY 25
CJU 2L

Note : Departure under ICAO Flight Procedures.



JEJU TWO LIMA DEPARTURE

Climb on R 245 YDM until D6, then turn Right direct to YDM via R 325 YDM, then direct to CJU via R 145 YDM.

- * Minimum 6.0% CG is required for ATC purpose and 4.0% CG is required until 4 500 ft for OBST avoidance.
- * Cross R 297 YDM between 7 000 ft and 9 000 ft, then YDM at 9 000 ft and maintain 9 000 ft unless otherwise directed by ATC.

Change : Information of sequence for TWR FREQ.

INTENTIONALLY

LEFT

BLANK

JEJU DEP	119.225
	121.2
JEJU TWR	118.2
	118.55

JEJU/Jeju Intl(RKPC)
RWY 31
RNAV KAMIT 2N
RNAV AKPON 1N

ELEV. ALT IN FEET
DIST IN NM
BRG ARE MAG
VAR 7° W

True North

NOTE
1. RNAV 1 operation.
2. GNSS required.
3. ATS surveillance service required.

GENERAL INFORMATION
1. If unable to comply with flight restrictions or RNAV 1, advise ATC for alternative.

RNAV KAMIT TWO NOVEMBER DEPARTURE : PC861 - PC871 - PC872 - TOREN - OLLEH - KAMIT
7.0% climb is required for ATC purpose.

RNAV AKPON ONE NOVEMBER DEPARTURE : PC861 - PC871 - PC872 - TOREN - PC874 - AKPON
7.0% climb is required for ATC purpose.

MOA 24
FL 400
10 000 AMSL

MOA 25L
9 000 AMSL
3 000 AGL

MSA 25 NM
JEU ARP

MOA 39
5 000 AMSL
SFC

RK R126
3 000 AMSL
GND

MOA 41
5 000 AMSL
SFC

AKPON 1N

KAMIT 2N

Scale: 1 : 550 000
0 10 20 km
0 5 10 NM

Waypoints and Altitudes:
PC891 (5 000)
PC871 (5 000)
PC872 (8 000)
KIDOS (11 000)
TOREN (11 000)
PC874 (26 000)
AKPON (26 000)
DOTOL (IPDAS) (17 600)
KAMIT (17 600)
OLLEH (12 000)

Angles and Distances:
PC891-PC871: 5.3 (007°)
PC871-PC872: 7.0 (061°)
PC872-KIDOS: 9.0 (061°)
KIDOS-TOREN: 9.8 (030°)
TOREN-PC874: 26.0 (097°)
PC874-AKPON: 7.5 (111°)
TOREN-DOTOL: 17.6 (012°)
DOTOL-KAMIT: 17.6 (012°)
TOREN-OLLEH: 9.8 (030°)

AIP AMDT 5/23

AERONAUTICAL DATA TABULATION

Standard Instrument Departure Procedure Coding Tables

RNAV KAMIT 2N

Serial Number	Path Descriptor	Waypoint Identifier	Fly-over	Course/Track °M(°T)	Distance (NM)	Turn direction	Altitude (ft)	Speed (kt)	Coordinates	VPA/ TCH	Navigation specification	Remarks
001	CF	PC861	-	313(305.6)	4.7	-	-	-	33°33'43.8"N 126°24'34.1"E	-	RNAV 1	-
002	TF	PC871	-	007(359.7)	5.3	-	-5 000	-	33°39'05.3"N 126°24'32.0"E	-	RNAV 1	-
003	TF	PC872	-	061(053.5)	7.0	-	-8 000	-	33°43'16.9"N 126°31'18.7"E	-	RNAV 1	-
004	TF	TOREN	-	061(053.5)	9.0	-	+11 000	-	33°48'36.8"N 126°39'57.7"E	-	RNAV 1	-
005	TF	OLLEH	-	030(022.3)	9.8	-	-12 000	-	33°57'42.2"N 126°44'26.5"E	-	RNAV 1	-
006	TF	KAMIT	-	012(005.0)	17.6	-	-FL 160	-	34°15'14.1"N 126°46'17.7"E	-	RNAV 1	-

RNAV AKPON 1N

Serial Number	Path Descriptor	Waypoint Identifier	Fly-over	Course/Track °M(°T)	Distance (NM)	Turn direction	Altitude (ft)	Speed (kt)	Coordinates	VPA/ TCH	Navigation specification	Remarks
001	CF	PC861	-	313(305.6)	4.7	-	-	-	33°33'43.8"N 126°24'34.1"E	-	RNAV 1	-
002	TF	PC871	-	007(359.7)	5.3	-	-5 000	-	33°39'05.3"N 126°24'32.0"E	-	RNAV 1	-
003	TF	PC872	-	061(053.5)	7.0	-	-8 000	-	33°43'16.9"N 126°31'18.7"E	-	RNAV 1	-
004	TF	TOREN	-	061(053.5)	9.0	-	+11 000	-	33°48'36.8"N 126°39'57.7"E	-	RNAV 1	-
005	TF	PC874	-	097(089.8)	26.0	-	-	-	33°48'38.0"N 127°11'08.8"E	-	RNAV 1	-
006	TF	AKPON	-	111(103.9)	7.5	-	-	-	33°46'49.6"N 127°19'53.0"E	-	RNAV 1	-

**STANDARD DEPARTURE CHART
INSTRUMENT(SID) - ICAO**

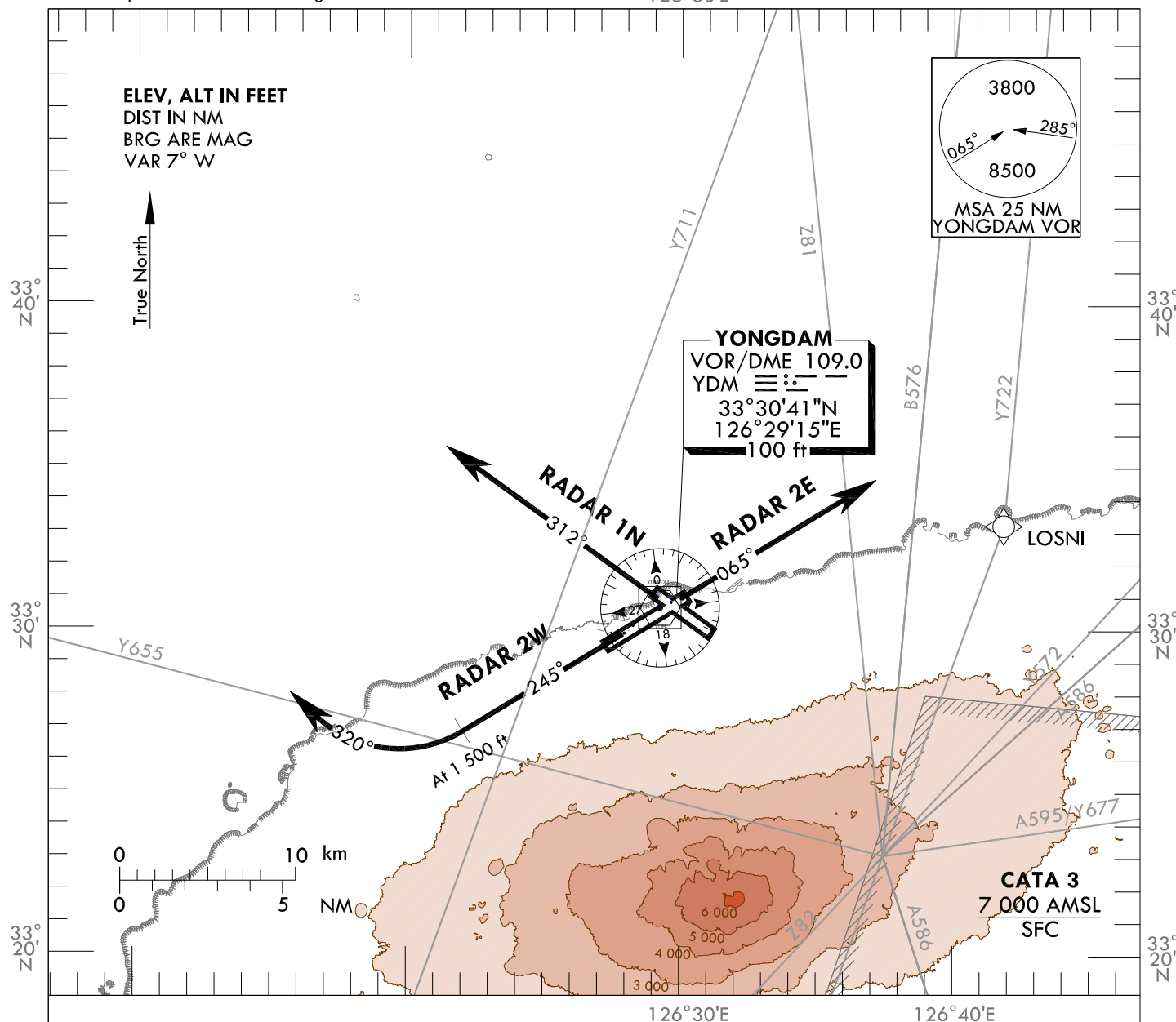
TRANSITION ALT 14 000
TRANSITION LVL FL 140

JEJU DEP 119.225
121.2
JEJU TWR 118.2
118.55

JEJU/Jeju Intl(RKPC)
RWY 07 RADAR 2E
RWY 25 RADAR 2W
RWY 31 RADAR 1N

Note : Departure under ICAO Flight Procedures.

126°30'E



RADAR TWO ECHO DEPARTURE

TAKE OFF RWY 07 : Climb on RWY HDG until reaching 2 200 ft for RADAR VECTOR.

* Minumum 4.5% CG is required until 2 200 ft for ATC purpose.

RADAR TWO WHISKEY DEPARTURE

TAKE OFF RWY 25 : Climb on RWY HDG until reaching 1 500 ft, then turn Right HDG 320° and climb and maintain 3 000 ft for RADAR VECTOR.

* Minumum 4.0% CG is required until 3 000 ft for OBST avoidance.

RADAR ONE NOVEMBER DEPARTURE

TAKE OFF RWY 31 : Climb on RWY HDG until reaching 2 200 ft for RADAR VECTOR.

* Minumum 4.5% CG is required until 2 200 ft for ATC purpose.

NOTE : These procedures are available only for aircraft that don't satisfy RNAV 1 navigation specification.

Change : Information of sequence for TWR FREQ and Withdrawal of CJU VORTAC.

INTENTIONALLY

LEFT

BLANK